

1st Semester Final Exam Review Bell Ringer #1

1 – 16

Ch 1: Intro to Earth Science

Ch 8: Earthquakes

Ch 9: Plate Tectonics

Ch 10: Volcanoes

Ch1: 1) The thing that divides the earth into the Northern and Southern Hemispheres is the

- a) **Prime Meridian**
- b) **Equator**
- c) **North Pole**
- d) **South Pole**

Ch 1: 2) **Ninety degrees north latitude is the**

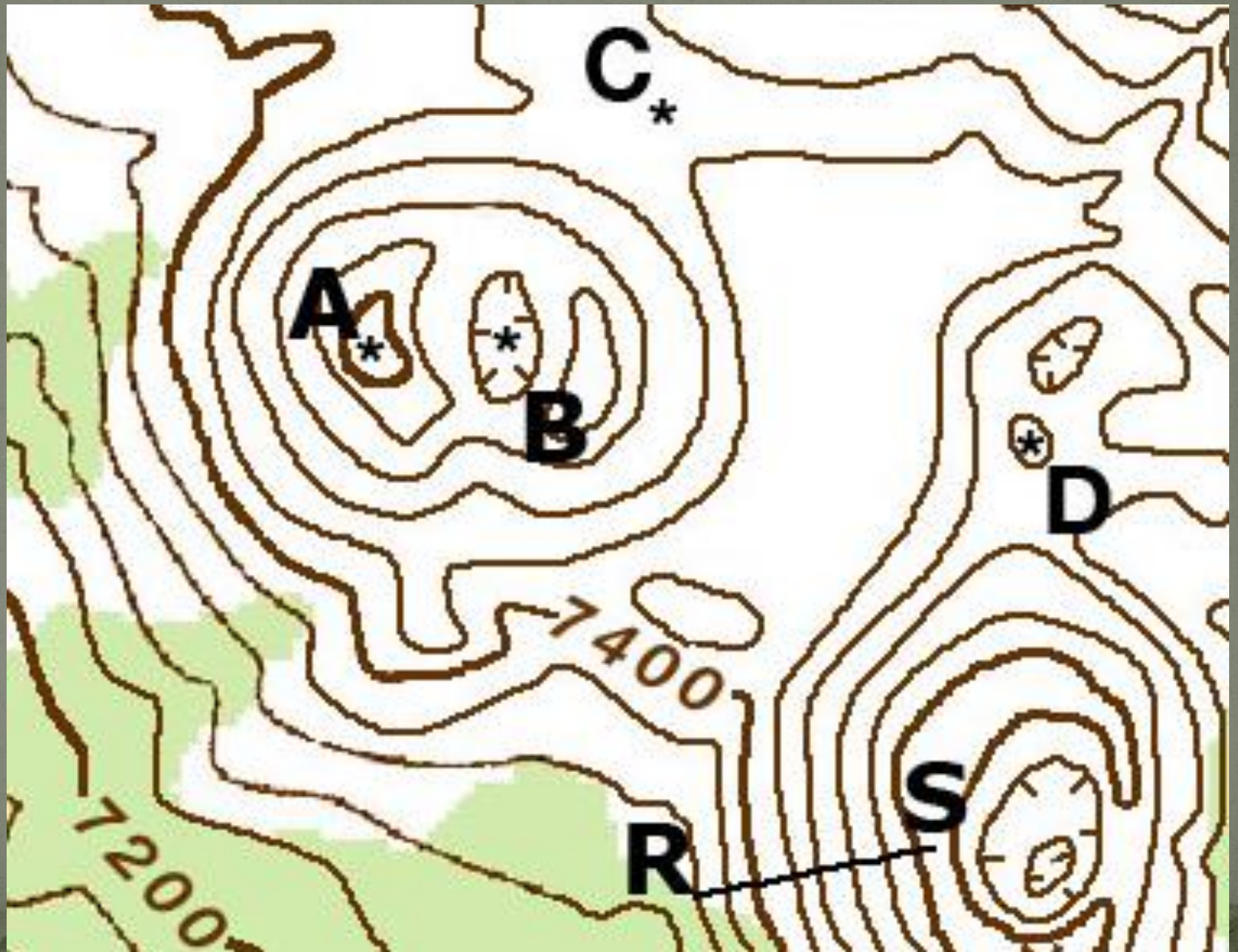
- a) **Prime Meridian**
- b) **Equator**
- c) **North Pole**
- d) **South Pole**

Ch 1: 3) Show areas that are steep

- Map projection
- Contour interval
- Mercator projection
- Close contour lines
- V-shape contours map scale
- Spread out contour lines
- Topographic map
- elevation



Ch 1: 4) What is the elevation at B?



Ch 8: 5) The instrument that records earthquakes is called

- a) a seismogram.
- b) a seismologist.
- c) seismology.
- d) a seismograph.

Ch 8: 6) What is the location on the surface directly above the earthquake called?

- a) Epicenter
- b) Focus
- c) Magnitude
- d) Fault

Ch 8: 7) What property that is different for P and S waves provides a method for locating the epicenter of an earthquake?

- a) **Magnitude**
- b) **Location**
- c) **modes of travel**
- d) **speed**

Ch 8: 8) What scale is currently used to express the magnitude of an earthquake?

- a) Richter scale
- b) Saffir-Simpson scale
- c) Tsunami scale
- d) Fujita scale

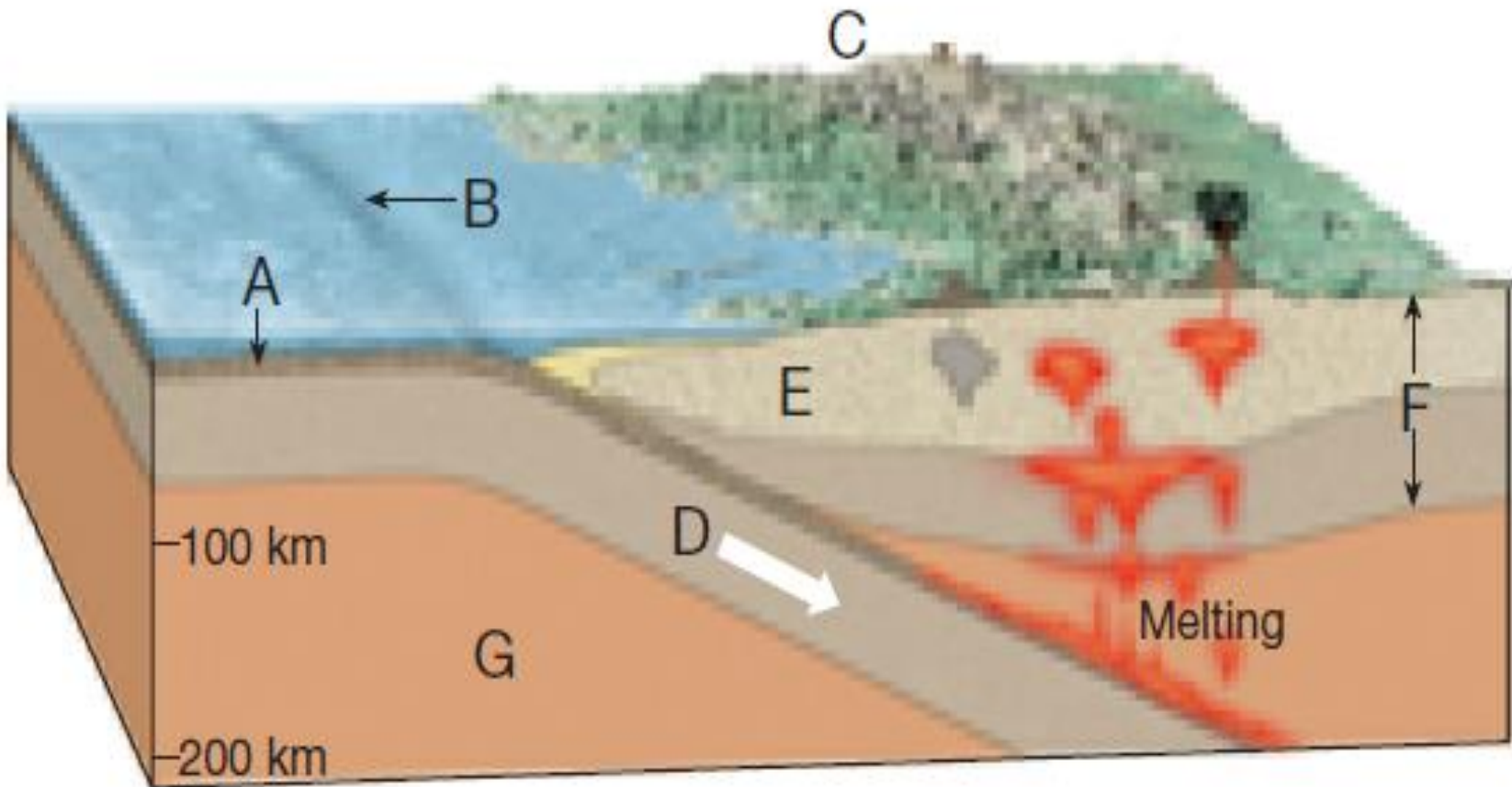
Ch 9: 9) A divergent boundary is a boundary between two plates that _____.

- a) slide along each other
- b) Converge
- c) move away from each other
- d) move toward each other

Ch 9: 10) What happens when an oceanic plate converges with a continental plate?

- a) The less dense oceanic plate slides past the denser continental plate.
- b) The denser oceanic plate slides under the less dense continental plate.
- c) The denser oceanic plate slides on top of the less dense continental plate.
- d) The less dense oceanic plate slides under the denser continental plate.

Ch 9: 11) What type of plate boundary?



Ch 9: 12) According to the property of paleomagnetism, _____.

- a) All rocks have reversed polarity
- b) All rocks, regardless of when they formed, have the same polarity
- c) Rocks do not possess magnetic properties
- d) Iron-rich rocks show the location of the magnetic poles at the time of their formation

Ch 10: 13) The most violent type of volcanic activity is associated with

- a) cinder cones.
- b) sills.
- c) composite cones.
- d) shield volcanoes.

Ch 10: 14) A magma's viscosity is directly related to its _____.

- a) **Depth**
- b) **Color**
- c) **Age**
- d) **Silica content**

Ch 10: 15) The greatest volume of volcanic material is produced by

- a) eruptions of cinder cones.
- b) eruptions of composite cones.
- c) eruptions along ocean ridges.
- d) eruptions of shield volcanoes.